

## Kansas College of Direct Support

### Monthly Summary of Kansas College of Direct Support Use

**October 2007**

#### Number of Learners and Lessons Completed as of the First of Each Month

Month	Number of Learners				Number of Lessons Completed			
	Under Kansas Administrator	ISS	Starkey	Total	Under Kansas Administrator	ISS	Starkey	Total
January	<b>0</b>			-	<b>0</b>	-		-
February	<b>200</b>	185	64	449	<b>203</b>	4391	1405	5999
March	<b>340</b>	185	69	594	<b>883</b>	4407	1573	6863
April	<b>601</b>	69*	68	738	<b>2212</b>	2064*	1732	6008*
May	<b>682</b>	70	76	828	<b>3753</b>	2101	1800	7654
June	<b>755</b>	72	83	910	<b>5111</b>	2404	1837	9352
July	<b>1010</b>	77	87	1174	<b>6470</b>	2764	1986	11220
August	<b>1125</b>	81	96	1302	<b>7610</b>	3111	2030	12751
September	<b>1299</b>	83	100	1482	<b>9066</b>	3258	1933	14257
October	<b>1454</b>	88	105	1647	<b>10748</b>	4046	2030	16824

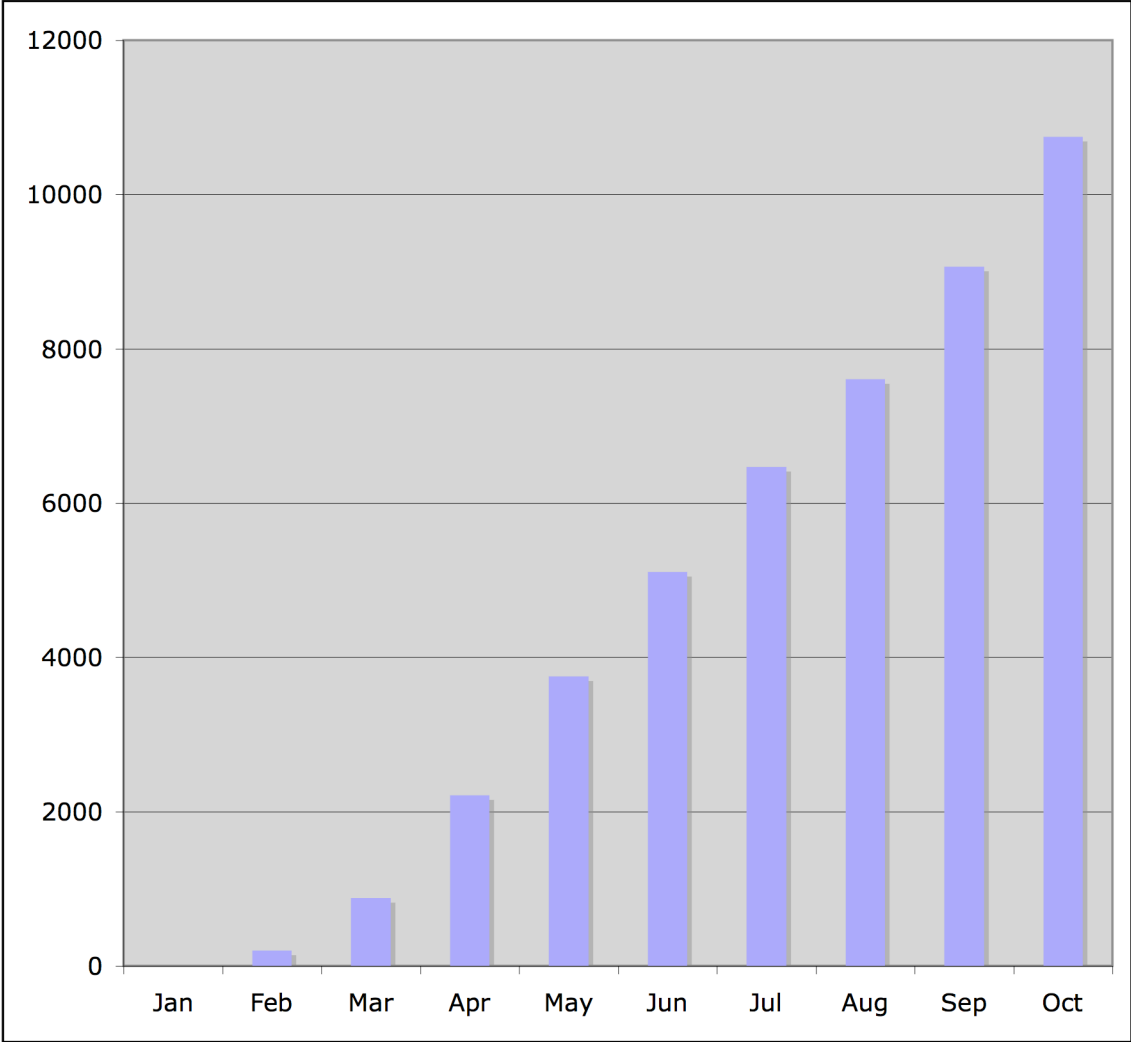
*\* ISS removed learners who had completed all lessons and their reports from their database. Thus the totals appear to have decreased. Use across Kansas has increased.*

The College of Direct Support in Kansas continues to expand. More than 16,800 lessons have been completed. Kansas now has over 1,600 learners enrolled!

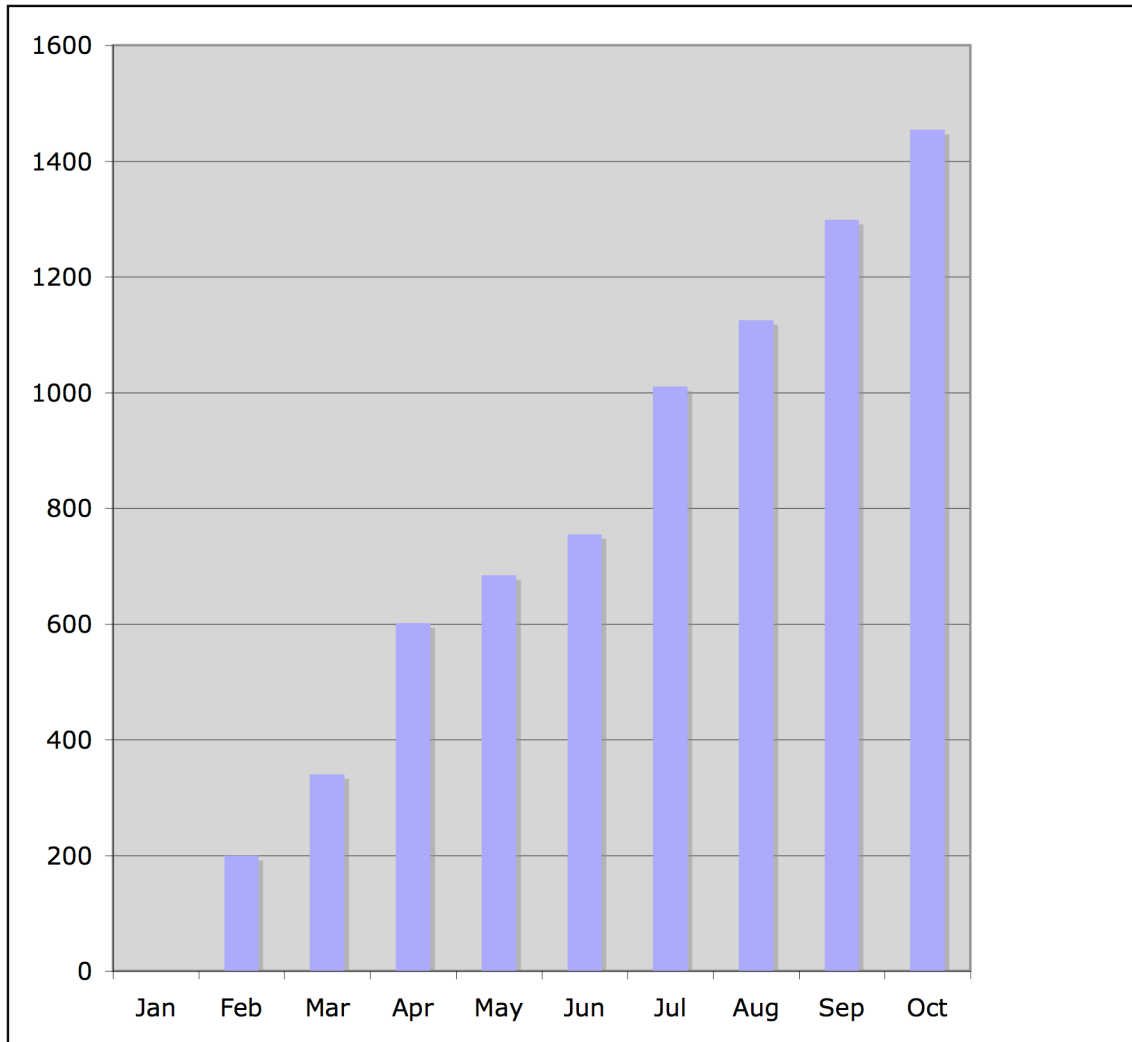
#### Activities

- Technical assistance and training continues
- Two presentation proposals were submitted for the October InterHab conference (One was at InterHab's request to discuss credentialing and apprenticeship options linked to CDS. The other is a general session on CDS)
- A proposal was submitted to the self-advocate conference in October. Kelly Smith will co-present.
- Next advisory meeting scheduled for Wichita on November 29<sup>th</sup>
- Trainers from Southeast Kansas meet in Parsons on September 28<sup>th</sup>.
- Regional meetings have been scheduled for trainers in Topeka, Wichita, and Dodge City

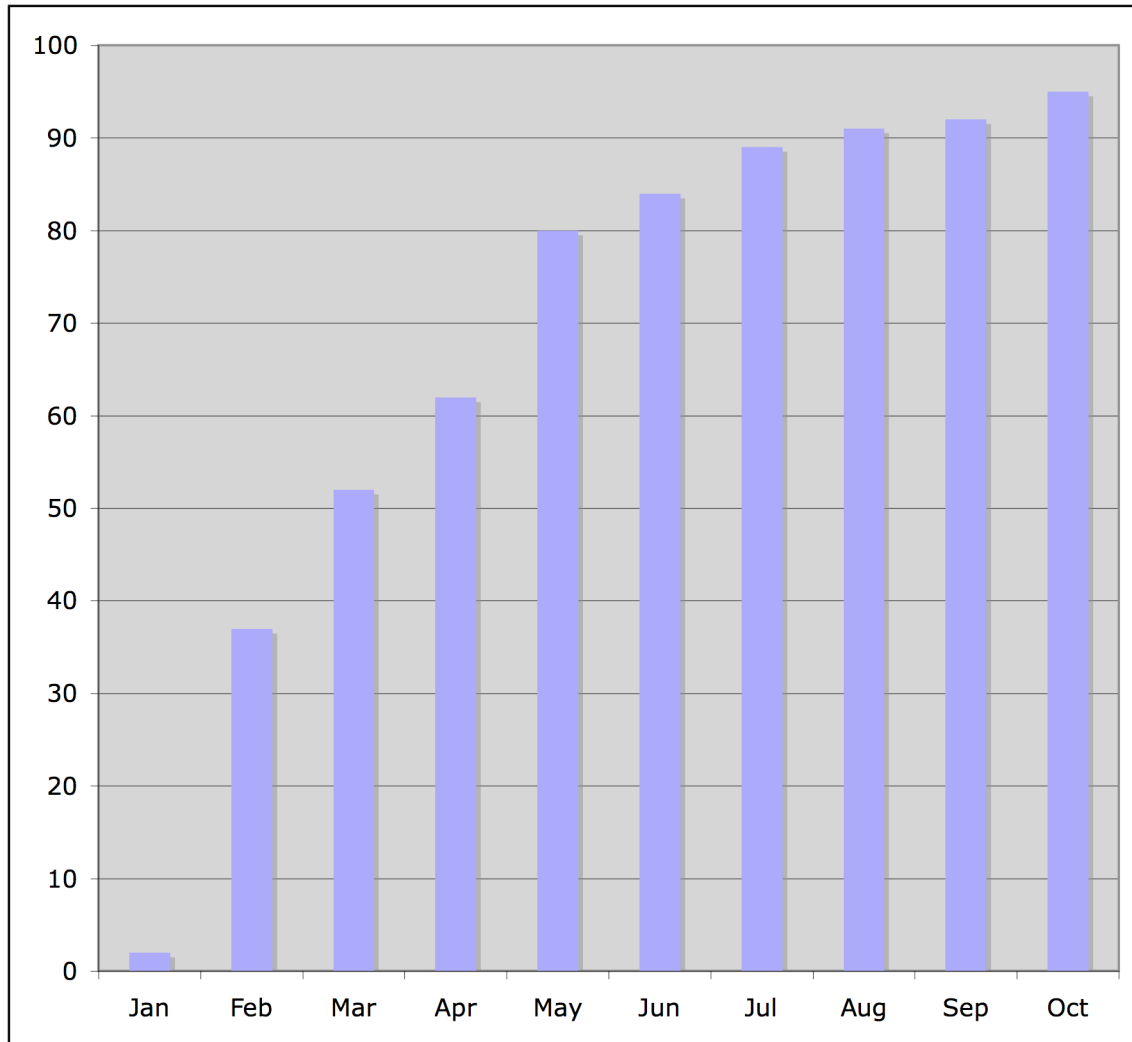
**Number of Lessons Completed Under the Kansas Administrator by the First of the Month**



**Number of Learners Enrolled in CDS Under the Kansas Administrator  
on the First of the Month**



## Number of Service Providers\* Enrolled in CDS on the First of Each Month



\* Includes case management providers.

The number of agencies participating continues to grow. Ninety five service providers and three case management agencies in addition to foster parents and parents, are accessing the College of Direct Support.

**Service Providers Enrolled in College of Direct Support  
October 1, 2007**

Provider	Local Administrator(s) Trained	Kansas Admin For Provider's Employees	Administrative Training Scheduled	Identifying Local Contact Training Pending	Reviewing Content
1. ACS	X				
2. Anita Motto					X
3. Arrowhead	X				
4. Auspision					X
5. Bethany House Self-Directed Services	X				
6. BLHS					X
7. Bridges	X				
8. Brown County	X				
9. Cain's Quality Care					X
10. Care By Design					X
11. Catholic Social Services	X				
12. CCDS (CDDO)	X				
13. CCL	X				
14. Cedar Vale Human Services					X
15. Cerebral Palsy Research Foundation	X				
16. Choices	X				
17. CLASS	X				
18. CLO	X				
19. COF	X				
20. Community Connections, LLC		X			
21. <i>Connections - Rescare</i>					X
22. Cottonwood	X				
23. Destiny Supports, Inc.					X
24. DSGP	X				
25. DSNWK	X				
26. Doniphan County	X				
27. Eagle Creek Homes					X
28. Envision	X				
29. <i>Flinthills</i>			X		
30. Futures	X				
31. Golden West	X				
32. Good Will Easter Seals					X
33. Graves, Inc		X			
34. <i>Hartford, Inc</i>					X
35. Heartland, Inc dba L'Arche Heartland	X				
36. Heartstrings	X				
37. Home at Last					X
38. Home Base, LLC (trains through Heartstrings)	(X)				

39. House of Hope					X
40. The Homestead					X
41. ISS	X				
42. Jackson County					X
43. JCDS	X				
44. Just-in-time	X				
45. Karis, Inc.					X
46. KETCH	X				
47. Lakemary	X				
48. Lakeside Terrace					X
49. Lawrence Community Innkeepers					X
50. Life Patterns	X				
51. Loving Hearts Training Center, Inc					X
52. MOSAIC – Ellsworth	X				
53. MOSAIC- Liberal	X				
54. National Alliance					X
55. Nemaha	X				
56. New Beginnings	X				
57. New Beginnings of McPherson, Inc					X
58. OCK					X
59. Paradigm					X
60. PSH&TC					X
61. Payroll Plus					X
62. Peters, Colleen & Rodney		X			
63. Quality Residential Care					X
64. Rainbows	X				
65. Residential Alternatives, Inc	X				
66. ResCare Newton					X
67. ResCare-Life Choices Wichita	X				
68. Riverside Resources	X				
69. Rose Palms					X
70. Rosewood					X
71. SEK Respite					X
72. Self- Management Services					X
73. Sensitive Home Care, LLC					X
74. Sheltered Living	X				
75. Southwinds Community Alternatives					X
76. Special Needs Billing	X				
77. Starkey	X				
78. Summit - ResCare	X				
79. Sunflower Diversified	X				
80. Sunflower Home Health					X

81. Sunflower Supports	X				
82. TARC	X				
83. TECH					X
84. TSS	X				
85. <i>Trinity In Home Care</i>	<i>X</i>				
86. Tri-Ko	X				
87. Tri-Valley					X
88. Twin Rivers					X
89. Twin Valley					X
90. We Care Agency, LLC		X			
91. Wyandotte CDDO	X				
92. Zachary House				X	

*Italics indicate new user or change in status from the previous month.*

### Case Management

93. Dream Catchers Case Management	X				
94. Lisa Jolliff- Case management		X			
95. Southwestern Case Management		X			

### Other Kansas Users - No local Administrator

Foster Care	9
Parents (Not through local providers)	2
Self – Advocate	1
SRS	2