

# Kansas College of Direct Support

**2007**

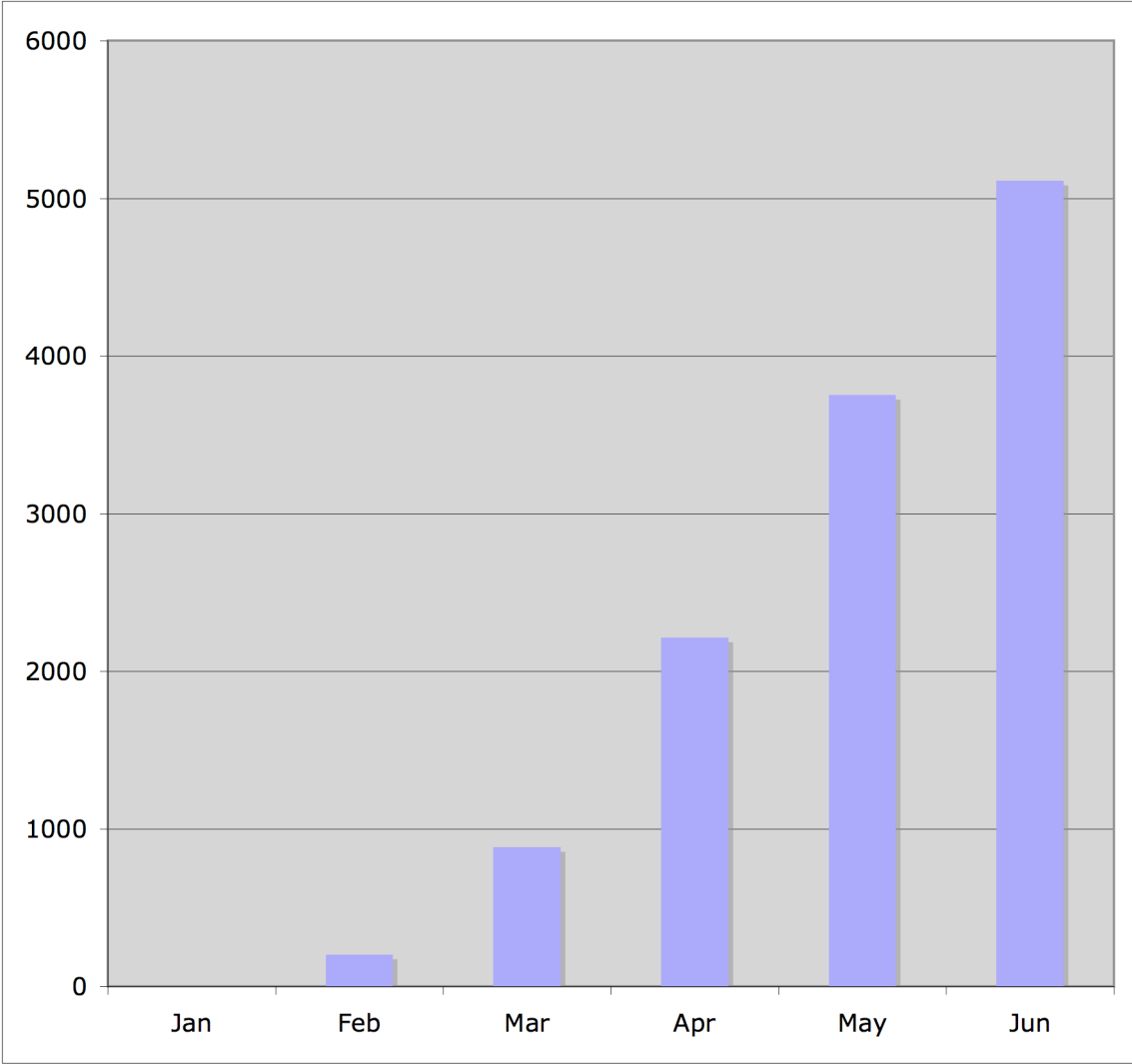
Use of the College of Direct Support in Kansas continues to expand. Numbers of learners, lessons completed, and service providers continue to grow.

## Monthly Summary of Kansas College of Direct Support Use

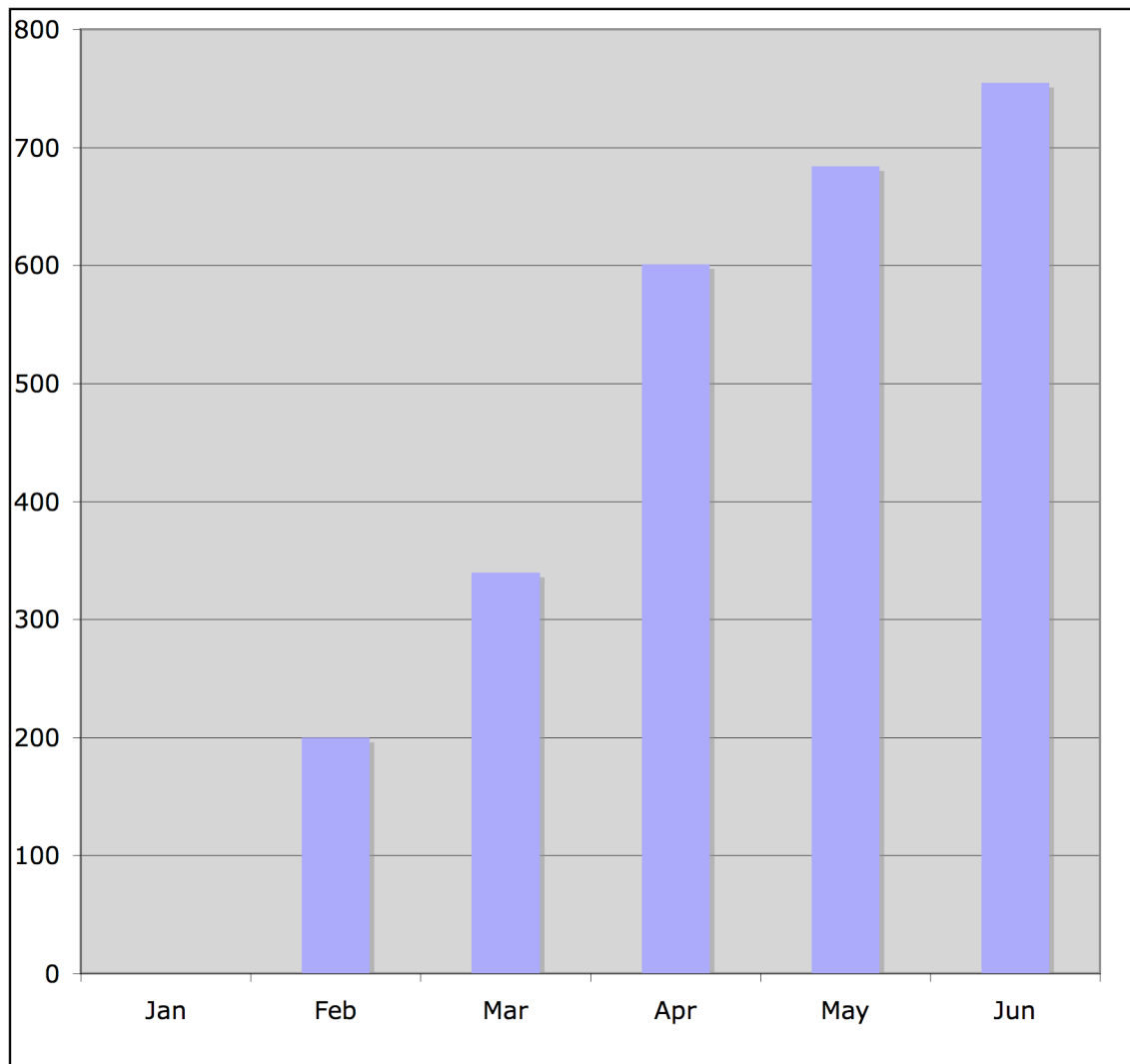
Month	Number of Learners				Number of Lessons Completed			
	Under Kansas Administrator	ISS	Starkey	Total	Under Kansas Administrator	ISS	Starkey	Total
January	<b>0</b>			-	<b>0</b>	-		-
February	<b>200</b>	185	64	449	<b>203</b>	4391	1405	5999
March	<b>340</b>	185	69	594	<b>883</b>	4407	1573	6863
April	<b>601</b>	69*	68	738	<b>2212</b>	2064*	1732	6008*
May	<b>682</b>	70	76	828	<b>3753</b>	2101	1800	7654
June	<b>755</b>	72	83	910	<b>5111</b>	2404	1837	9352

\* ISS removed learners who had completed all lessons and their reports from their data base. Thus the totals appear to have decreased. Use across Kansas has increased.

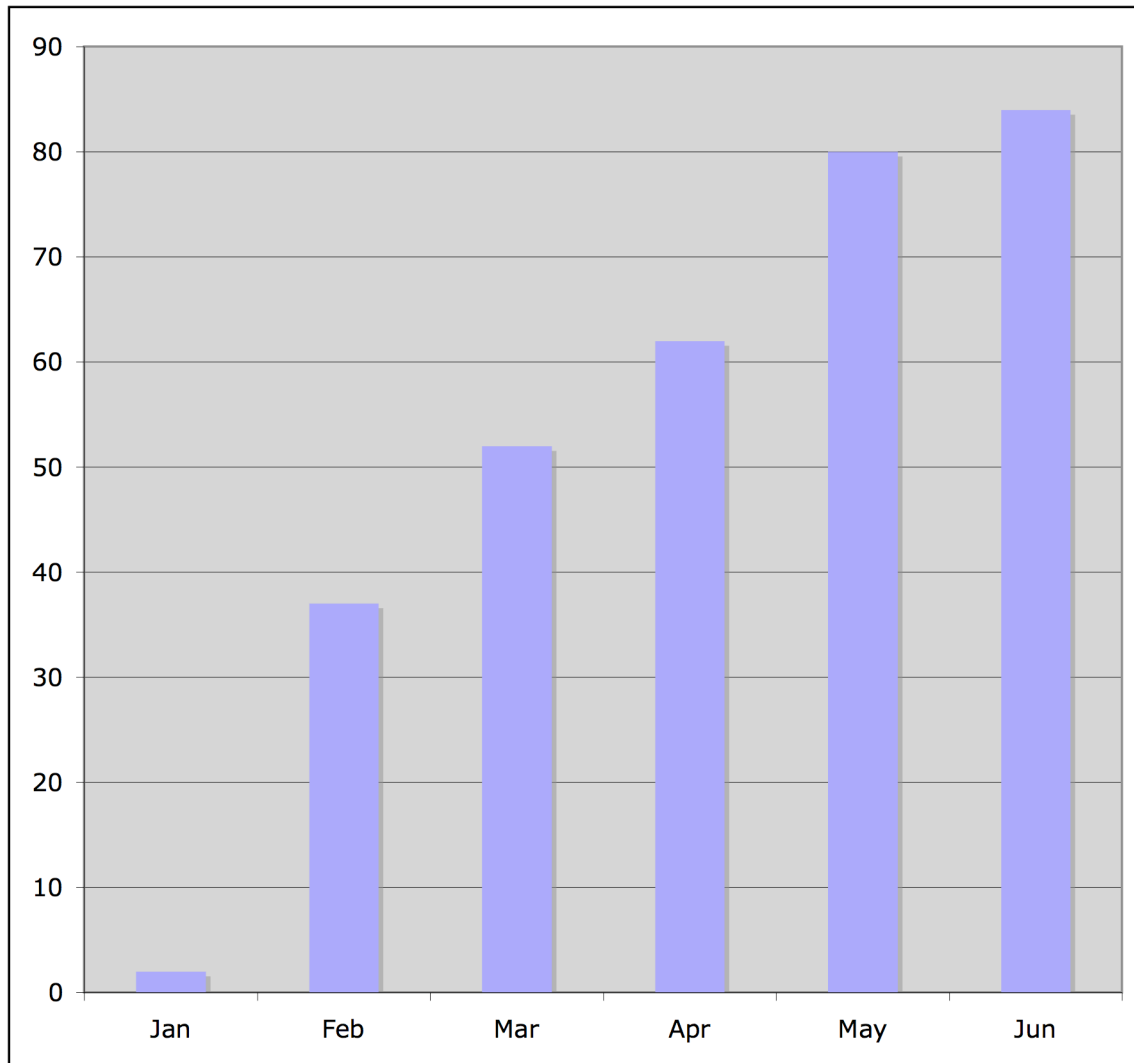
**Number of Lessons Completed Under the Kansas Administrator as of the First of the Month**



**Number of Learners Enrolled in CDS Under the Kansas Administrator  
on the First of the Month**



### **Number of Service Providers Enrolled in CDS as of the First of Each Month**



The number of agencies participating continues to grow. Entry into CDS is a gradual process. Providers begin by reviewing the courses and developing a plan for implementation. Eighty service providers, in addition to foster parents and parents, are accessing the College of Direct Support. Several more providers have information and are considering how to use CDS.

**Service Providers Enrolled in College of Direct Support  
June 1, 2007**

Provider	Local Administrator(s) Trained	Kansas Admin For Provider's Employees	Administrative Training Scheduled	Identifying Local Contact Training Pending	Reviewing Content
1. ACS	X				
2. <i>Anita Motto</i>					<i>x</i>
3. Arrowhead	X				
4. Auspision					X
5. <i>Bethany House Self-Directed Services</i>	<i>X</i>				
6. BLHS					X
7. Bridges	X				
8. Brown County	X				
9. Cain's Quality Care					X
10. <i>Care By Design</i>					<i>X</i>
11. Catholic Social Services	X				
12. CCDS (CDDO)	X				
13. CCL	X				
14. Cedar Vale Human Services					X
15. <i>Cerebral Palsy Research Foundation</i>			<i>X</i>		
16. Choices	X				
17. CLASS	X				
18. CLO					X
19. COF	X				
20. Community Connections, LLC		X			
21. Cottonwood	X				
22. Destiny Supports, Inc.					X
23. DSGP	X				
24. DSNWK	X				
25. Eagle Creek Homes					X
26. Envision	X				
27. Flinthills				X	
28. Futures	X				
29. Golden West	X				
30. Good Will Easter Seals					X
31. Graves, Inc		X			
32. Heartstrings	X				
33. Home at Last					X
34. Home Base, LLC (trains through Heartstrings)	(X)				
35. House of Hope					X
36. The Homestead					X
37. ISS	X				
38. Jackson County					X
39. JCDS	X				

40. Just-in-time	X				
41. Karis, Inc.					X
42. KETCH	X				
43. Lakemary	X				
44. Lakeside Terrace					X
45. Lawrence Community Innkeepers					X
46. Life Patterns	X				
47. Loving Hearts Training Center, Inc					X
48. MOSAIC – Ellsworth	X				
49. MOSAIC- Liberal	X				
50. National Alliance					X
51. Nemaha	X				
52. New Beginnings	X				
53. New Beginnings of McPherson, Inc					X
54. Paradigm					X
55. PSH&TC					X
56. Payroll Plus					X
57. Peters, Colleen & Rodney		X			
58. Rainbows	X				
59. ResCare Newton					X
60. <i>ResCare Wichita</i>				X	
61. Riverside Resources	X				
62. Rose Palms					X
63. Rosewood					X
64. SEK Respite					X
65. Self- Management Services					X
66. Sensitive Home Care, LLC					X
67. Sheltered Living	X				
68. Southwinds Community Alternatives					X
69. Special Needs Billing	X				
70. Starkey	X				
71. Summit - ResCare					X
72. Sunflower Diversified	X				
73. Sunflower Home Health					X
74. Sunflower Supports	X				
75. TARC	X				
76. TECH					X
77. TSS	X				
78. Tri-Ko	X				
79. Tri-Valley					X
80. Twin Rivers					X
81. <i>Twin Valley</i>					X
82. We Care Agency, LLC		X			
83. Wyandotte CDDO	X				
84. Zachary House				X	

*Italics indicate new user or change in status from the previous month.*

**Other Kansas Users- No local Administrator**

Lake Mary Foster Care	6
SEK Foster Parent	1
Parents (Not through local providers)	1
SRS	2
Lifespan Case Management Lisa Jolliff Lisa Jolliff- Case management	1

**Other Major Activities**

- The Kansans Mobilizing for Change Advisory Board Meeting was held on 5-17-07.
- A mailing (brochure, positive experiences, invitation to register) was sent to service providers who have been difficult to reach
- An article for Families Together newsletter was written
- Watch for the article in the Frontline Initiative coming out soon
- Technical assistance and training continues
- Plans have been made to present at the InterHab workforce conference in Wichita on July 12<sup>th</sup>